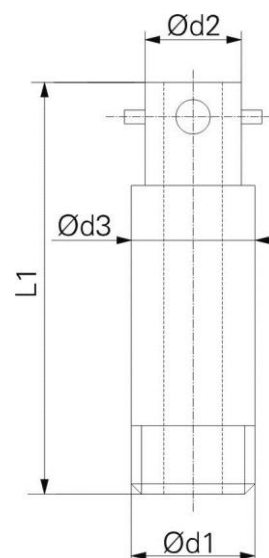


SCREW-IN NIPPLES FOR PLUG-IN PROBES

Type ZD 0020 – round

Round screw-in nipple for plug-in probes with bayonet lock
 Material: brass 2.0380 or stainless steel 1.4301 (on request)

ETB-article number	Thread Ø d1	Diam. Ø d2	Diam. Ø d3	Length L1
HW0000696	M10	12 mm	12 mm	30 mm
HW0000843	M10	12 mm	12 mm	60 mm
HW0000459	M10x1	12 mm	12 mm	30 mm
HW0001213	M10x1	12 mm	12 mm	60 mm
HW0000860	M12	12 mm	12 mm	30 mm
HW0000403	M12	12 mm	12 mm	60 mm
HW0000022	M12x1	12 mm	12 mm	30 mm
HW0000234	M12x1	12 mm	12 mm	45 mm
HW0000339	M12x1	12 mm	12 mm	60 mm
HW0000088	M12x1	12 mm	12 mm	80 mm
HW0000632	M12x1	12 mm	12 mm	100 mm
HW0000597	M14x1.5	14 mm	14 mm	30 mm
HW0000753	M14x1.5	14 mm	14 mm	44 mm
HW0000243	M14x1.5	14 mm	14 mm	60 mm
HW0001273	M16x1.5	14 mm	16 mm	45 mm
HW0001273	M16x1.5	14 mm	16 mm	60 mm
HW0001201	G 1/8"	12 mm	12 mm	30 mm
HW0001202	G 1/8"	12 mm	12 mm	60 mm
HW0000786	G 1/4"	12 mm	14 mm	45 mm
HW0001457	G 1/4"	12 mm	14 mm	60 mm
HW0001393	G 1/4"	14 mm	14 mm	30 mm
HW0001267	G 1/4"	14 mm	14 mm	45 mm
HW0001030	G 1/4"	14 mm	14 mm	60 mm
HW0000477	G 3/8"	14 mm	18 mm	45 mm
HW0001352	G 3/8"	14 mm	18 mm	60 mm



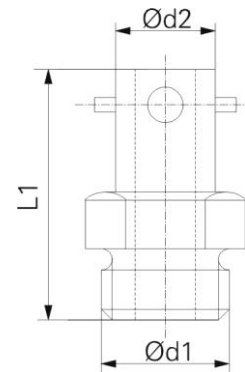
Other threads and lengths available on request.

SCREW-IN NIPPLES FOR PLUG-IN PROBES

Type ZD 0021 – hexagonal

Screw-in nipple with hex socket (17 mm) for plug-in probes with bayonet lock
 Material: brass 2.0380 or stainless steel 1.4301 (on request)

ETB-article number	Thread d1	Diam. D2	Length L1
HW0000784	M 10	12 mm	30 mm
HW0000650	M 10x1	12 mm	30 mm
HW0000613	M12	12 mm	30 mm
HW0000393	M12x1	12 mm	30 mm
HW0001534	M14x1.5	14 mm	30 mm
HW0001744	G1/8"	12 mm	30 mm
HW0000408	G 1/4"	12 mm	30 mm
HW0001195	G 1/4"	14 mm	30 mm
HW0001988	G 1/4"	14 mm	60 mm
HW0000743	G 3/8"	14 mm	30 mm
HW0000744	G 3/8"	14 mm	60 mm



Other threads and lengths available on request.