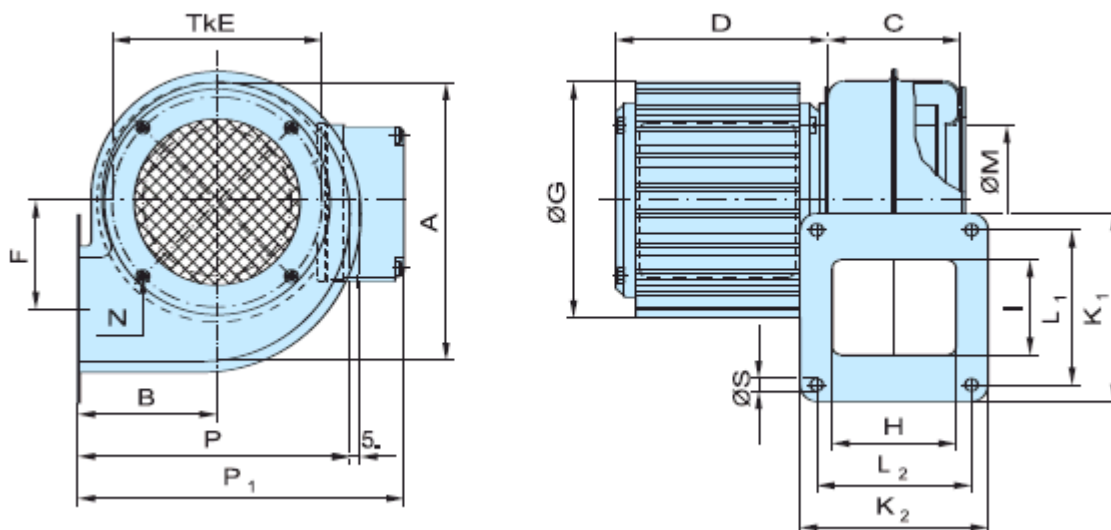
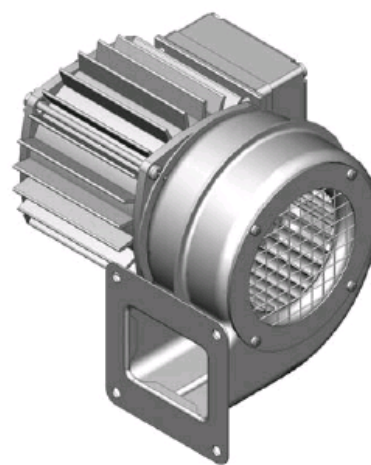
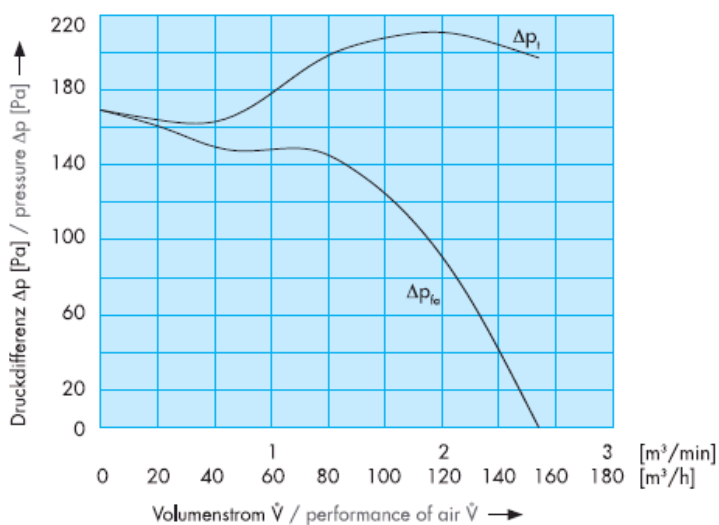


# NIEDERDRUCK GEBLÄSE 1-1,5

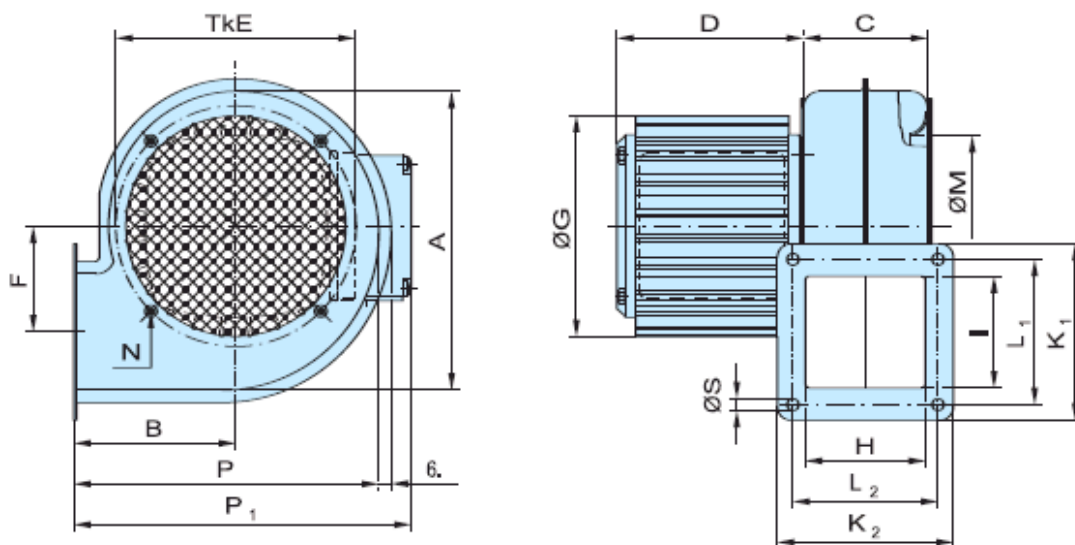
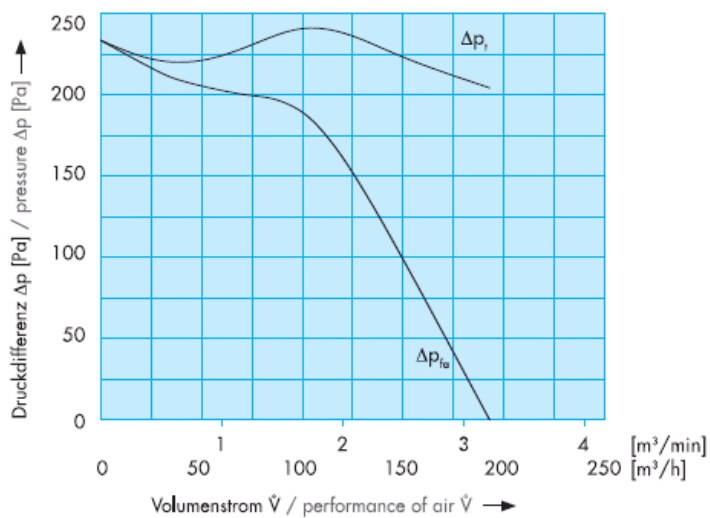
	ENG 1-1,5 (1-phasig)		DNG 1-1,5 (3-phasig)	
Volumenstrom	max.	150 m <sup>3</sup> /h	max.	150 m <sup>3</sup> /h
Nennleistung		30 W		30 W
Nennspannung		230 V		230/400V
Nennzahl		2760 U/min		2760 U/min
Frequenz		50 Hz		50 Hz



A	B	C	D	E	F	G	H	I	K1	K2	L1	L2	M	N	P	P1	S
126	63	60	96	95	48,5	108	55,5	43	85	85	70	70	67	M3	123	148	5,8

## NIEDERDRUCK GEBLÄSE 2-2,5

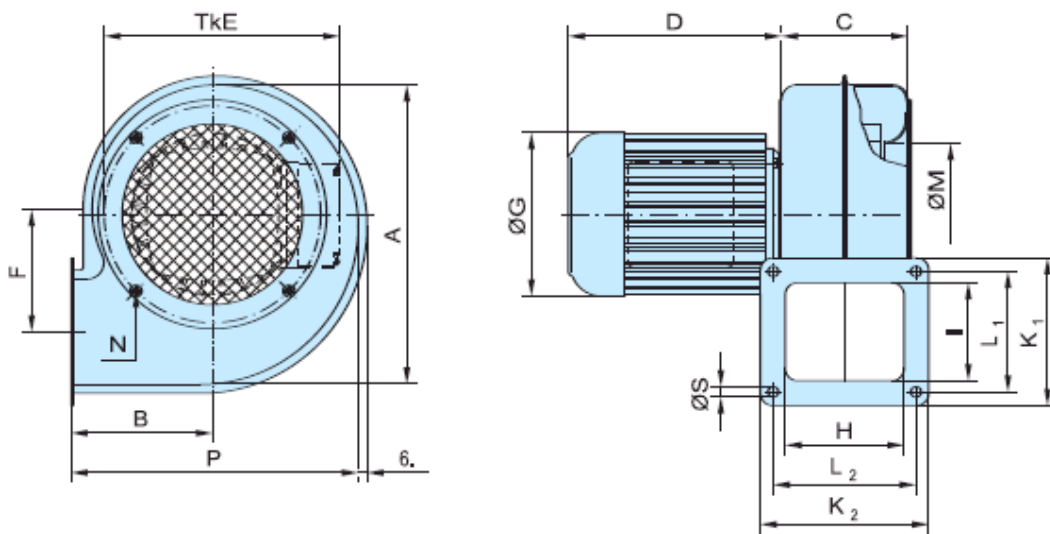
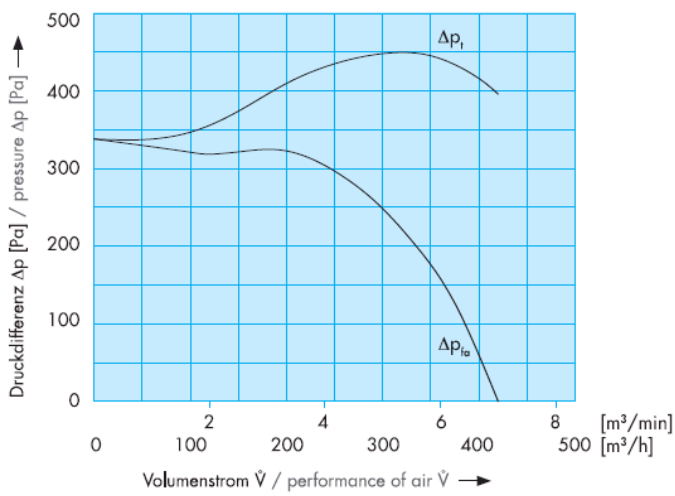
	<b>ENG 2-2,5</b> (1-phasig)	<b>DNG 2-2,5</b> (3-phasig)
Volumenstrom	max. 190 m <sup>3</sup> /h	max. 190 m <sup>3</sup> /h
Nennleistung	30 W	30 W
Nennspannung	230 V	230/400V
Nenndrehzahl	2760 U/min	2760 U/min
Frequenz	50 Hz	50 Hz



A	B	C	D	E	F	G	H	I	K1	K2	L1	L2	M	N	P	P1	S
144	79	60	90	116	51	108	55,5	52	85	85	70	70	87	M3	148	165	5,8

# NIEDERDRUCK GEBLÄSE 3-6

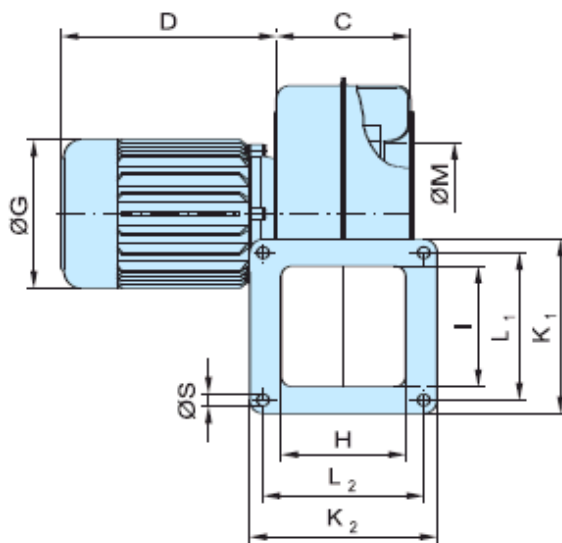
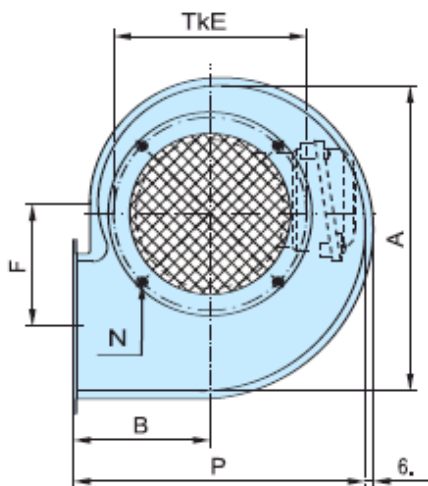
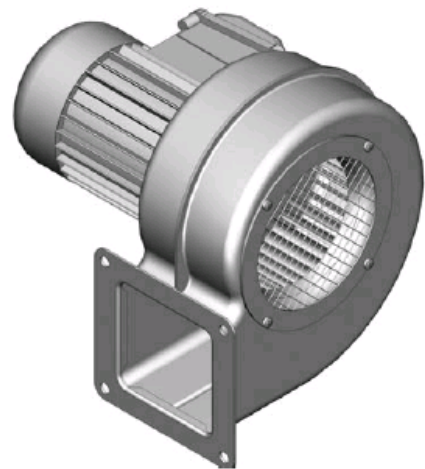
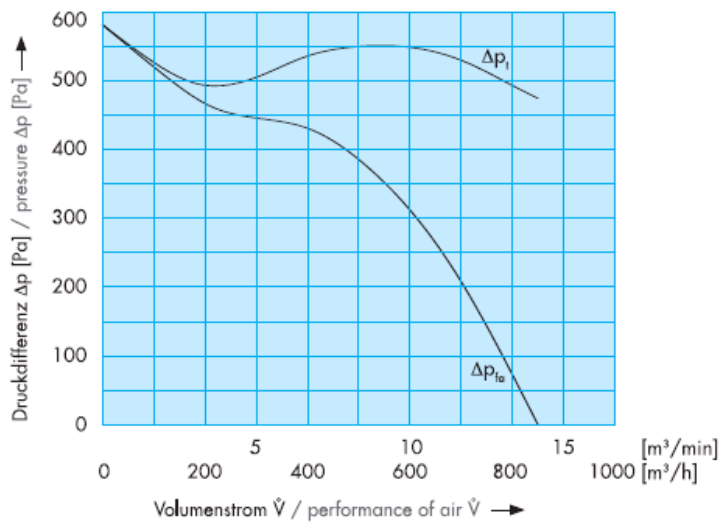
	<b>ENG 3-6</b> (1-phasig)	<b>DNG 3-6</b> (3-phasig)
Volumenstrom	max. 430 m <sup>3</sup> /h	max. 430 m <sup>3</sup> /h
Nennleistung	90 W	90 W
Nennspannung	230 V	230/400V
Nennzahl	2770 U/min	2760 U/min
Frequenz	50 Hz	50 Hz



A	B	C	D	E	F	G	H	I	K1	K2	L1	L2	M	N	P	P1	S
199	94	84	125	144	78	109	79	65	98	112	80	95	94	M4	191	-	7

# NIEDERDRUCK GEBLÄSE 4-14

	<b>ENG 4-14</b> (1-phasig)	<b>DNG 4-14</b> (3-phasig)
Volumenstrom	max. 850 m <sup>3</sup> /h	max. 850 m <sup>3</sup> /h
Nennleistung	180 W	180 W
Nennspannung	230 V	230/400V
Nennzahl	2730 U/min	2730 U/min
Frequenz	50 Hz	50 Hz



A	B	C	D	E	F	G	H	I	K1	K2	L1	L2	M	N	P	P1	S
228	102	100	162	144	84	111	93	90	130	140	110	120	107	M4	218	-	9